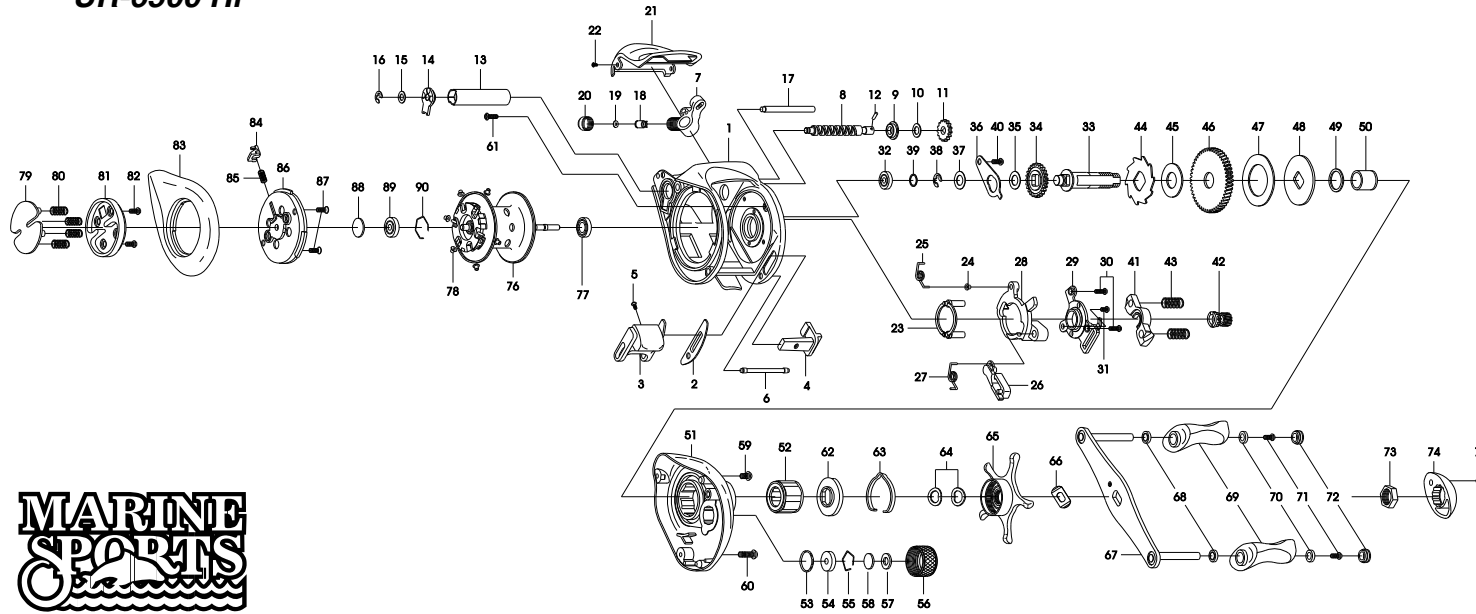


# URANO

## UR-6500 Hi



THE ORDER OF THE PART NUMBER IS BASED ON THAT OF THE REEL ASSEMBLY

NO	PART NAME	NO	PART NAME	NO	PART NAME	NO	PART NAME	NO	PART NAME
1	FRAME	16	E-RING	31	CAM PLATE SCREW (B)	46	DRIVE GEAR	61	RIGHT SIDE COVER SCREW (C)6
2	CLUTCH BAR PLATE	17	PILLAR	32	BALL BEARING	47	DRAG WASHER (B)	62	CLICK PLATE
3	CLUTCH BAR ASSEMBLY	18	LINE GUIDE PAWL	33	CRANK SHAFT	48	DRAG WASHER (D)	63	CLICK LEAF SPRING
4	CLUTCH LINK	19	SPACER (OPTIONAL)	34	IDLER (L)	49	SLEEVE WASHER (OPTIONAL)	64	DRAG SPRING WASHER (*2)
5	CLUTCH BAR SCREW	20	PAWL CAP	35	IDLER (L) WASHER (A) (OPTIONAL)	50	SLEEVE	65	STAR DRAG
6	CLUTCH BAR SUPPORT	21	FRONT COVER	36	BEARING PLATE	51	RIGHT SIDE COVER ASSEMBLY	66	LEAF SPRING
7	LINE GUIDE ASSEMBLY	22	FRONT COVER SCREW	37	IDLER (L) WASHER (B)	52	ONE WAY CLUTCH	67	HANDLE ASSEMBLY
8	WORM SHAFT	23	YOKE HOLDER	38	E-RING	53	O-RING	68	BALL BEARING (*2)
9	WORM SHAFT BUSHING (A)	24	CLUTCH SPRING BUSHING	39	CRANK SHAFT SPACER (OPTIONAL)	54	BUSHING	69	HANDLE KNOB (*2)
10	IDLER (S) WASHER (OPTIONAL)	25	CLUTCH SPRING	40	BEARING PLATE SCREW	55	BEARING RETAINER	70	BUSH (*2)
11	IDLER (S)	26	RETURN PAWL	41	PINION YOKE	56	CAST CONTROL CAP	71	SCREW (*2)
12	WORM SHAFT PIN	27	RETURN PAWL SPRING	42	PINION GEAR	57	TENSION WASHER	72	HANDLE KNOB CAP (*2)
13	LINE GUIDE PIPE	28	CLUTCH CAM	43	PINION YOKE SPRING (*2)	58	SPOOL SPACER (B)	73	HANDLE NUT
14	WORM SHAFT BUSHING (B)	29	CAM PLATE	44	RATCHET	59	RIGHT SIDE COVER SCREW (A)4	74	HANDLE NUT CAP
15	WORM SHAFT WASHER (OPTIONAL)	30	CAM PLATE SCREW (A) (*2)	45	RATCHET WASHER	60	RIGHT SIDE COVER SCREW (B)5	75	HANDLE NUT CAP SCREW
								76	BEARING RETAINER
								77	BALL BEARING
								78	BRAKE COLLAR (WHITE) (*6)
								79	LEVER PLATE
								80	LEVER PLATE SPRING (*4)
								81	LOCK LEVER
								82	LOCK LEVER SCREW (*2)
								83	LEFT SIDE COVER
								84	LOCK PIN
								85	LOCK PIN SPRING
								86	SPOOL COVER ASSEMBLY
								87	SPOOL COVER SCREW (*2)
								88	SPOOL SPACER (A)
								89	BALL BEARING
								90	BEARING RETAINER