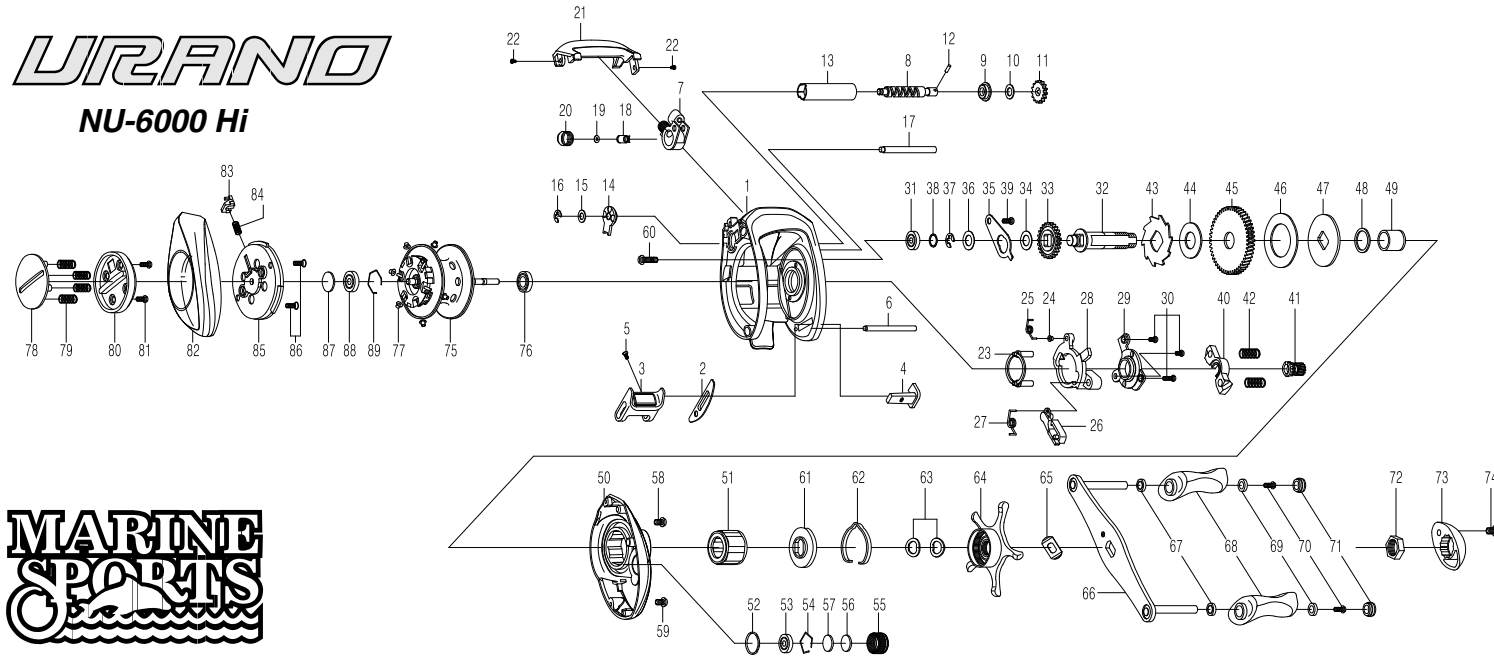


# URANO

## NU-6000 Hi



THE ORDER OF THE PART NUMBER IS BASED ON THAT OF THE REEL ASSEMBLY

NO	PART NAME	NO	PART NAME	NO	PART NAME	NO	PART NAME	NO	PART NAME	NO	PART NAME	NO	PART NAME
1	FRAME	16	E-RING	31	BALL BEARING	46	DRAG WASHER (B)	61	CLICK PLATE	76	BALL BEARING	91	
2	CLUTCH BAR PLATE	17	PILLAR	32	CRANK SHAFT	47	DRAG WASHER (D)	62	CLICK LEAF SPRING	77	BRAKE COLLAR(WHITE) (+6)	92	
3	CLUTCH BAR ASSEMBLY	18	LINE GUIDE PAWL	33	IDLER(L)	48	SLEEVE WASHER(OPTIONAL)	63	DRAG SPRING WASHER(+2)	78	LEVER PLATE	93	
4	CLUTCH LINK	19	SPACER(OPTIONAL)	34	IDLER(L) WASHER(A) (OPTIONAL)	49	SLEEVE	64	STAR DRAG	79	LEVER PLATE SPRING(+4)	94	
5	CLUTCH BAR SCREW	20	PAWL CAP	35	BEARING PLATE	50	RIGHT SIDE COVER ASSEMBLY	65	LEAF SPRING	80	LOCK LEVER	95	
6	CLUTCH BAR SUPPORT	21	FRONT COVER	36	IDLER(L) WASHER (B)	51	ONE WAY CLUTCH	66	HANDLE ASSEMBLY	81	LOCK LEVER SCREW(+2)	96	
7	LINE GUIDE ASSEMBLY	22	FRONT COVER SCREW(+2)	37	E-RING	52	O-RING	67	BALL BEARING(+2)	82	LEFT SIDE COVER	97	
8	WORM SHAFT	23	YOKE HOLDER	38	CRACK SHAFT SPACER(OPTIONAL)	53	BUSHING	68	HANDLE KNOB(+2)	83	LOCK PIN	98	
9	WORM SHAFT BUSHING (A)	24	CLUTCH SPRING BUSHING	39	BEARING PLATE SCREW	54	BEARING RETAINER	69	BUSH(+2)	84	LOCK PIN SPRING	99	
10	IDLER(S) WASHER(OPTIONAL)	25	CLUTCH SPRING	40	PINION YOKE	55	CAST CONTROL CAP	70	SCREW(+2)	85	SPOOL COVER ASSEMBLY	100	
11	IDLER(S)	26	RETURN PAWL	41	PINION GEAR	56	TENSION WASHER	71	HANDLE KNOB CAP(+2)	86	SPOOL COVER SCREW(+2)	101	
12	WORM SHAFT PIN	27	RETURN PAWL SPRING	42	PINION YOKE SPRING(+2)	57	SPOOL SPACER(B)	72	HANDLE NUT	87	SPOOL SPACER(A)	102	
13	LINE GUIDE PIPE	28	CLUTCH CAM	43	RATCHET	58	RIGHT SIDE COVER SCREW (A)	73	HANDLE KNOB CAP	88	BALL BEARING	103	
14	WORM SHAFT BUSHING (B)	29	CAM PLATE	44	RATCHET WASHER	59	RIGHT SIDE COVER SCREW (B)	74	HANDLE NUT CAP SCREW	89	BEARING RETAINER	104	
15	WORM SHAFT WASHER(OPTIONAL)	30	CAM PLATE SCREW(A) (+3)	45	DRIVE GEAR	60	RIGHT SIDE COVER SCREW (C)	75	SPOOL ASSEMBLY	90		105	