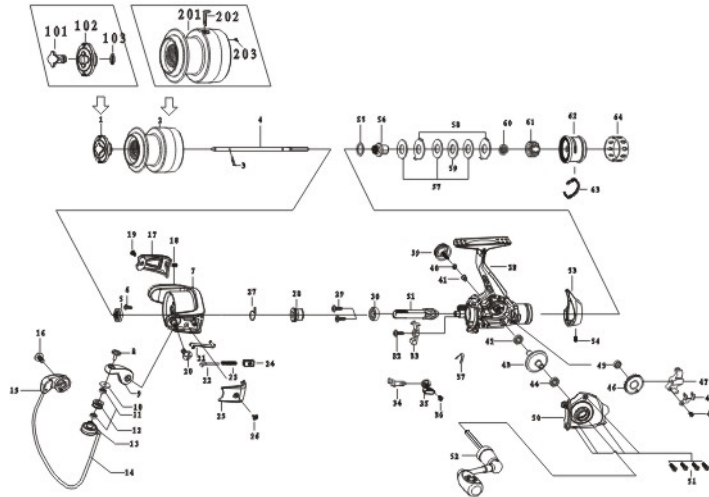


PRISMA



- | | | |
|--------------------------------|-----------------------------------|-----------------------------|
| 1 Spool Cover | 28 Silent Spring Bush | 55 Washer |
| 2 Spool | 29 Pinion Gear Ball Bearing Screw | 56 Rear Drag Clicker Gear |
| 3 Main Shaft Pin | 30 Pinion Gear Ball Bearing | 57 Drag Washer |
| 4 Main Shaft | 31 Pinion Gear | 58 Eared Washer |
| 5 Pinion Bolt | 32 Anti-reverse Pawl Screw | 59 Key Washer |
| 6 Rotor Screw | 33 Anti-reverse Pawl | 60 Drag Spring |
| 7 Rotor | 34 Anti-reverse Shaft | 61 Drag Screw |
| 8 Line Roller Screw | 35 Anti-reverse Switch | 62 Rear Drag Knob |
| 9 Ball Arm | 36 Anti-reverse Switch Screw | 63 Drag Knob Inner Fastener |
| 10 Line Roller Bushing | 37 Anti-reverse Spring | 64 Drag Knob Lantern Ring |
| 11 Line Roller Ball Bearing | 38 Body | |
| 12 Line Roller | 39 Handle Cap Screw | Spool Cover Assembly |
| 13 Line Roller Shaft | 40 Toothed Washer | 101 Spool Cover Button |
| 14 Ball Line | 41 Hexangular Washer | 102 Spool Cover |
| 15 Ball Holder | 42 Body Ball Bearing | 103 E-shape Ring |
| 16 Ball Holder Screw | 43 Drive Gear | |
| 17 Ball Holder Cover | 44 Main Cover Ball Bearing | Spool Assembly |
| 18 Ball Holder Cover Screw (1) | 45 Oscillating Gear Ball Bearing | 201 Spool |
| 19 Ball Holder Cover Screw (2) | 46 Oscillating Gear | 202 Line Clip |
| 20 Ball Arm Screw | 47 Oscillating Slider | 203 Line Clip Copper Needle |
| 21 Ball Trip Lever | 48 Oscillating Slider Retainer | |
| 22 Spring Seat Lever | 49 Oscillating Slider Screw | |
| 23 Lever Spring | 50 Main Cover | |
| 24 Lever Spring Seat | 51 Main Cover Screw | |
| 25 Ball Arm Cover | 52 Handle Assembly | |
| 26 Ball Arm Cover Screw | 53 Back Decorated Cover | |
| 27 Silent Spring | 54 Back Decorated Cover Screw | |

**MARINE
SPORTS**