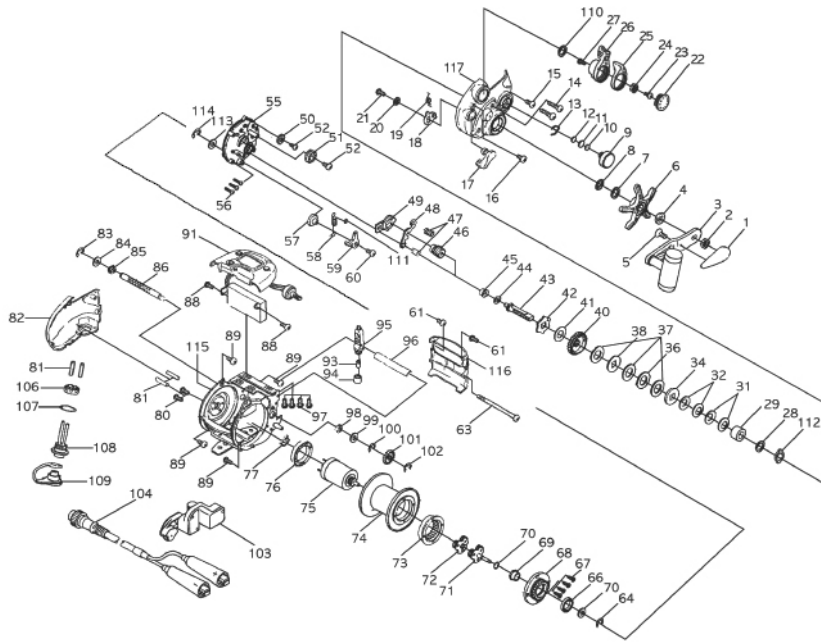




HIGH TECNOLOGY ELECTRIC REEL



Key No.	Parts Name	Key No.	Parts Name	Key No.	Parts Name	Key No.	Parts Name
1	HANDLE NUT CAP	27	TAP SCREW	59	ANT CLAW	91	CONTROL BOX ASSY
2	NUT	28	WASHER	60	SCREW	93	LEVEL WIND PIN
3	HANDLE ASSY	29	COLLAR	61	SCREW	94	NUT
4	WASHER	31	SPRING WASHER	63	SCREW	95	LEVEL WIND ASSY
5	TAP SCREW	32	DRAG SPRING	64	RETAINER	96	PIPE
6	STAR DRAG	34	WASHER-D2	66	BALL BEARING	97	TAP SCREW
7	WASHER	36	WASHER-A	67	SCREW	99	WASHER
8	CLICK HOLDER ASSY	37	WASHER	68	SPOOL COVER	100	RETAINER
9	TENSION KNOB	38	WASHER-D1	69	BEARING	101	TRAVERSE GEAR
10	WASHER	40	DRIVE GEAR	70	WASHER	102	RETAINER
11	WASHER	41	WASHER	71	GEAR SHAFT ASSY	103	COUNTER ASSY
12	WASHER	42	RATCHET ASSY	72	SUN GEAR ASSY	104	POWER CODE ASSY
13	LEAF SPRING	43	GEAR METAL	73	INTERNAL GEAR	106	NUT
14	SCREW	44	WASHER	74	SPOOL ASSY	107	SPRING WASHER
15	SCREW	45	BEARING	75	MOTOR ASSY	108	CONNECTOR ASSY
16	SCREW	46	PINION	76	BALL BEARING	109	WATER CAP
17	CLUTCH LEVER	47	COIL SPRING	77	LINE STOPPER	110	WASHER
18	CLUTCH LEVER CAM ASSY	48	CLUTCH BAR	80	SCREW	111	O-RING
19	CAM SPRING	49	CLUTCH CAM	81	HEAT SHRINKABLE TUBE	112	BUSH
20	TOOTH WASHER	50	JOINT GEAR-A	82	LEFT COVER PLATE	113	WASHER
21	SCREW	51	MAGNET ASSY	83	RETAINER	114	RETAINER
22	LEVER CAP	52	SCREW	84	WASHER	115	FRAME ASSY
23	TAP SCREW	55	FRAME COVER	85	BUSH	116	FRONT COVER
24	NUT	56	SCREW	86	WORM SHAFT	117	RIGHT COVER PLATE
25	SPEED LEVER-B	57	CLAW COLLAR	88	SCREW		
26	SPEED LEVER-A	58	CLAW SPRING	89	TAP SCREW		