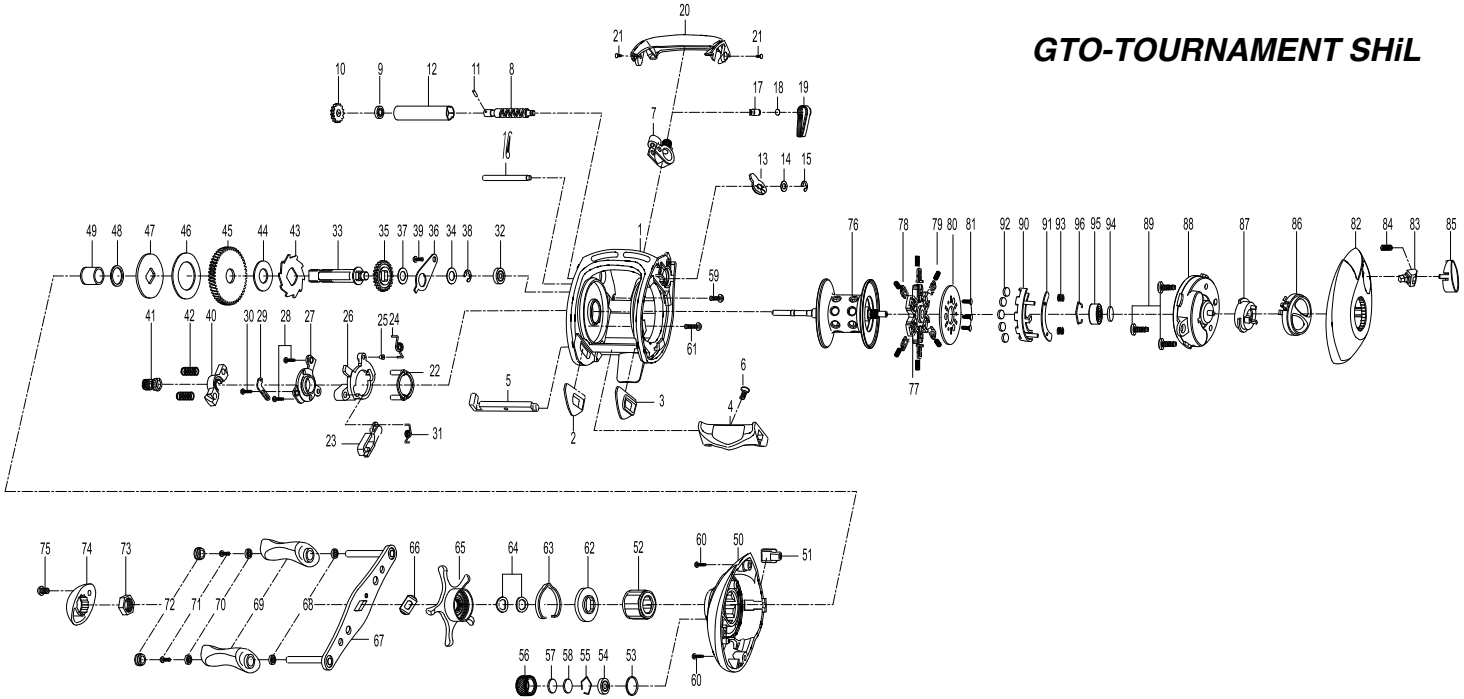


# GTO-TOURNAMENT SH1L



THE ORDER OF THE PART NUMBER IS BASED ON THAT OF THE REEL ASSEMBLY

NO	PART NAME	NO	PART NAME	NO	PART NAME	NO	PART NAME	NO	PART NAME	NO	PART NAME	NO	PART NAME
1	FRAME	16	PILLAR	31	RETURN PAWL SPRING	46	DRAG WASHER (B)	61	RIGHT SIDE COVER SCREW-B	76	SPOOL ASSEMBLY(INCL. 1 B.B.)	91	MAGNET HOLDER PLATE
2	CLUTCH BAR PLATE-A	17	LINE GUIDE PAWL	32	BALL BEARING	47	DRAG WASHER (D)	62	CLICK PLATE	77	BRAKE SHOE HOLDER	92	MAGNET(*5)
3	CLUTCH BAR PLATE-B	18	SPACER(OPTIONAL)	33	CRANK SHAFT	48	SLEEVE WASHER(OPTIONAL)	63	CLICK LEAF SPRING	78	BRAKE SHOE(*6)	93	MAGNET HOLDER SPRING(*2)
4	CLUTCH BAR ASSEMBLY	19	PAWL CAP	34	IDLER(L) WASHER (A)	49	SLEEVE	64	DRAG SPRING WASHER(*2)	79	BRAKE SHOE SPRING(*6)	94	SPOOL SPACER(A)
5	CLUTCH LINK	20	FRONT COVER	35	IDLER(L)	50	RIGHT SIDE COVER	65	STAR DRAG ASSEMBLY	80	BRAKE HOLDER PLATE	95	BALL BEARING
6	CLUTCH BAR SCREW	21	FRONT COVER SCREW	36	BEARING PLATE	51	SPACER	66	LEAF SPRING	81	BRAKE HOLDER PLATE SCREW(*3)	96	BEARING RETAINER
7	LINE GUIDE ASSEMBLY	22	YORK HOLDER	37	IDLER(L) WASHER (B)	52	ONE WAY CLUTCH	67	HANDLE ASSEMBLY	82	LEFT SIDE COVER		
8	WORM SHAFT	23	RETURN PAWL	38	E-RING	53	O-RING	68	BALL BEARING(*2)	83	LOCKING PIN		
9	BALL BEARING	24	CLUTCH SPRING	39	BEARING PLATE SCREW	54	BALL BEARING	69	HANDLE KNOB(*2)	84	LOCKING PIN SPRING		
10	IDLER(S)	25	CLUTCH SPRING BUSHING	40	PINION YOKE	55	BEARING RETAINER	70	BALL BEARING(*2)	85	PUSH BUTTON ASSEMBLY		
11	WORM SHAFT PIN	26	CLUTCH CAM	41	PINION GEAR	56	CAST CONTROL CAP	71	SCREW(*2)	86	CONTROL DIAL ASSEMBLY		
12	LINE GUIDE PIPE	27	CAM PLATE	42	PINION YOKE SPRING(*2)	57	TENSION WASHER	72	HANDLE KNOB CAP(*2)	87	SLIDE CAM		
13	WORM SHAFT BUSHING (B)	28	CLUTCH CAM SCREW (A) *2	43	RATCHET	58	SPOOL SPACER	73	HANDLE NUT	88	SPOOL COVER		
14	WORM SHAFT WASHER	29	CLUTCH SPRING HOLDER	44	RATCHET WASHER	59	SPACER SCREW	74	HANDLE NUT CAP	89	SPOOL COVER-SCREW		
15	E-RING	30	CLUTCH CAM SCREW (B)	45	DRIVE GEAR	60	RIGHT SIDE COVER SCREW-A	75	HANDLE NUT CAP SCREW	90	MAGNET HOLDER		