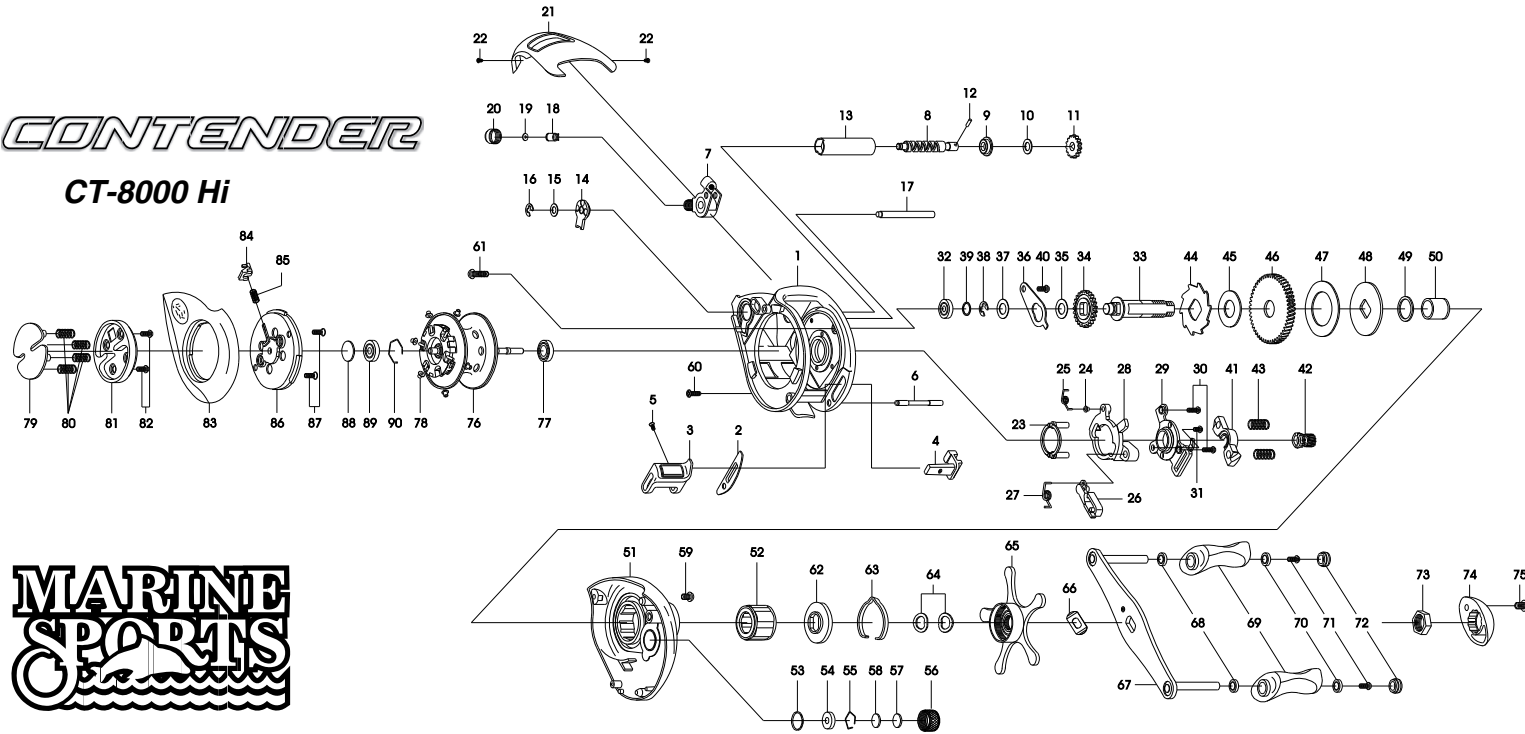


CONTENDER

CT-8000 Hi



THE ORDER OF THE PART NUMBER IS BASED ON THAT OF THE REEL ASSEMBLY

NO	PART NAME	NO	PART NAME	NO	PART NAME	NO	PART NAME	NO	PART NAME	NO	PART NAME
1	FRAME	16	E-RING	31	CAM PLATE SCREW (B)	46	DRIVE GEAR	61	RIGHT SIDE COVER SCREW (C)	76	SPOOL ASSEMBLY
2	CLUTCH BAR PLATE	17	PILLAR	32	BALL BEARING	47	DRAG WASHER (B)	62	CLICK PLATE	77	BALL BEARING
3	CLUTCH BAR ASSEMBLY	18	LINE GUIDE PAWL	33	CRANK SHAFT	48	DRAG WASHER (D)	63	CLICK LEAF SPRING	78	BRAKE COLLAR(WHITE) (+6)
4	CLUTCH LINK	19	SPACER(OPTIONAL)	34	IDLER(L)	49	SLEEVE WASHER(OPTIONAL)	64	DRAG SPRING WASHER(+2)	79	LEVER PLATE
5	CLUTCH BAR SCREW	20	PAWL CAP	35	IDLER(L) WASHER(A)(OPTIONAL)	50	SLEEVE	65	STAR DRAG ASSEMBLY	80	LEVER PLATE SPRING(+4)
6	CLUTCH BAR SUPPORT	21	FRONT COVER	36	BEARING PLATE	51	RIGHT SIDE COVER	66	LEAF SPRING	81	LOCK LEVER
7	LINE GUIDE ASSEMBLY	22	FRONT COVER SCREW(+2)	37	IDLER(L) WASHER (B)	52	ONE WAY CLUTCH	67	HANDLE ASSEMBLY	82	LOCK LEVER SCREW(+2)
8	WORM SHAFT	23	YOKE HOLDER	38	E-RING	53	O-RING	68	BALL BEARING(+2)	83	LEFT SIDE COVER ASSEMBLY
9	WORM SHAFT BUSHING (A)	24	CLUTCH SPRING BUSHING	39	CRANK SHAFT SPACER(OPTIONAL)	54	BUSHING	69	HANDLE KNOB(+2)	84	LOCK PIN
10	IDLER(S) WASHER(OPTIONAL)	25	CLUTCH SPRING	40	BEARING PLATE SCREW	55	BEARING RETAINER	70	BALL BEARING(+2)	85	LOCK PIN SPRING
11	IDLER(S)	26	RETURN PAWL	41	PINION YOKE	56	CAST CONTROL CAP	71	SCREW(+2)	86	SPOOL COVER ASSEMBLY
12	WORM SHAFT PIN	27	RETURN PAWL SPRING	42	PINION GEAR	57	TENSION WASHER	72	HANDLE KNOB CAP(+2)	87	SPOOL COVER SCREW(+2)
13	LINE GUIDE PIPE	28	CLUTCH CAM	43	PINION YOKE SPRING(+2)	58	SPOOL SPACER (B)	73	HANDLE NUT	88	SPOOL SPACER(A)
14	WORM SHAFT BUSHING (B)	29	CAM PLATE	44	RATCHET	59	RIGHT SIDE COVER SCREW (A)	74	HANDLE NUT CAP	89	BALL BEARING
15	WORM SHAFT WASHER(OPTIONAL)	30	CAM PLATE SCREW (A)(+2)	45	RATCHET WASHER	60	RIGHT SIDE COVER SCREW (B)	75	HANDLE NUT CAP SCREW	90	BEARING RETAINER