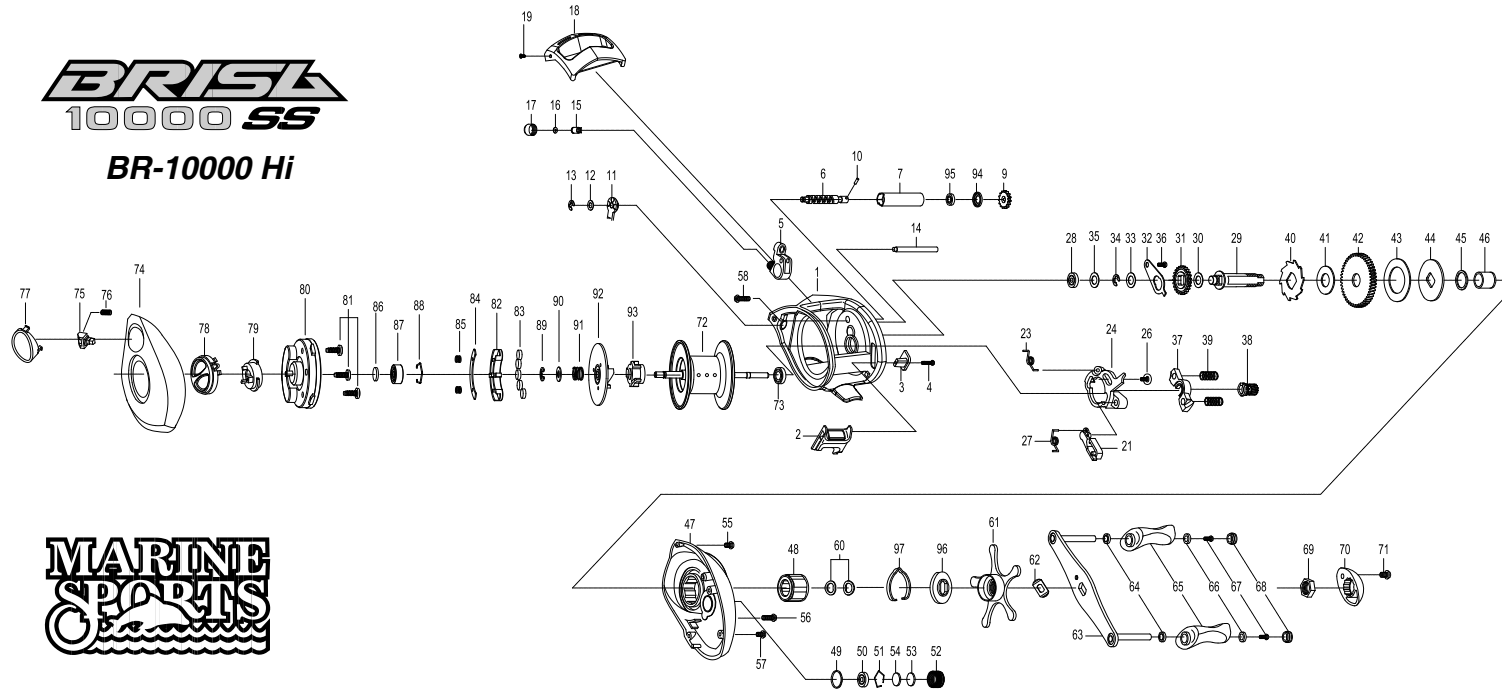


BRISL
10000 SS

BR-10000 Hi



MARINE
SPORTS

THE ORDER OF THE PART NUMBER IS BASED ON THAT OF THE REEL ASSEMBLY

NO	PART NAME	NO	PART NAME	NO	PART NAME	NO	PART NAME	NO	PART NAME	NO	PART NAME
1	FRAME	19	FRONT COVER SCREW	39	PINION YOKE SPRING(*2)	56	RIGHT SIDE COVER SCREW-B	73	BALL BEARING	90	WASHER
2	CLUTCH BAR	21	RETURN PAWL	40	RATCHET	57	RIGHT SIDE COVER SCREW-C	74	LEFT SIDE COVER	91	BRAKE CAM SPRING
3	CLUTCH LINK	23	CLUTCH SPRING	41	RATCHET WASHER	58	RIGHT SIDE COVER SCREW-D	75	LOCKING PIN	92	BRAKE CAM - B ASSEMBLY
4	CLUTCH BAR SCREW	24	CLUTCH CAM	42	DRIVE GEAR	59	DRAG SPACER	76	LOCKING PIN SPRING	93	BRAKE CAM - A
5	LINE GUIDE ASSEMBLY	26	CLUTCH CAM SCREW	43	DRAG WASHER (B)	60	DRAG SPRING WASHER(*2)	77	PUSH BUTTON ASSEMBLY	94	BALL BEARING
6	WORM SHAFT	27	RETURN PAWL SPRING	44	DRAG WASHER (D)	61	STAR DRAG ASSEMBLY	78	CONTROL DIAL ASSEMBLY	95	WORM SHAFT BUSHING
7	LINE GUIDE PIPE	28	BALL BEARING	45	SLEEVE WASHER(OPTIONAL)	62	LEAF SPRING	79	SLIDE CAM	96	CLICK PLATE
9	IDLER(S)	29	CRANK SHAFT	46	SLEEVE	63	HANDLE ASSEMBLY	80	SPOOL COVER	97	CLICK LEAF SPRING
10	WORM SHAFT PIN	30	IDLER(L) WASHER (A)	47	RIGHT SIDE COVER	64	BALL BEARING(*2)	81	SPOOL COVER-SCREW(*3)		
11	WORM SHAFT BUSHING (B)	31	IDLER(L)	48	ONE WAY CLUTCH	65	HANDLE KNOB(*2)	82	MAGNET HOLDER		
12	WORM SHAFT WASHER(OPTIONAL)	32	BEARING PLATE	49	O-RING	66	BALL BEARING(*2)	83	MAGNET(*5)		
13	E-RING	33	IDLER(L) WASHER (B)	50	BEARING	67	SCREW(*2)	84	MAGNET HOLDER PLATE		
14	PILLAR	34	E-RING	51	BEARING RETAINER	68	HANDLE KNOB CAP(*2)	85	MAGNET HOLDER SPRING(*2)		
15	LINE GUIDE PAWL	35	CRANK SHAFT SPACER(OPTIONAL)	52	CAST CONTROL CAP	69	HANDLE NUT	86	SPOOL SPACER(A)		
16	SPACER(OPTIONAL)	36	BEARING PLATE SCREW	53	TENSION WASHER	70	HANDLE NUT CAP	87	BALL BEARING		
17	PAWL CAP	37	PINION YOKE	54	SPOOL SPACER (B)	71	HANDLE NUT CAP SCREW	88	BEARING RETAINER		
18	FRONT COVER	38	PINION GEAR	55	RIGHT SIDE COVER SCREW-A	72	SPOOL ASSEMBLY	89	E-RING		