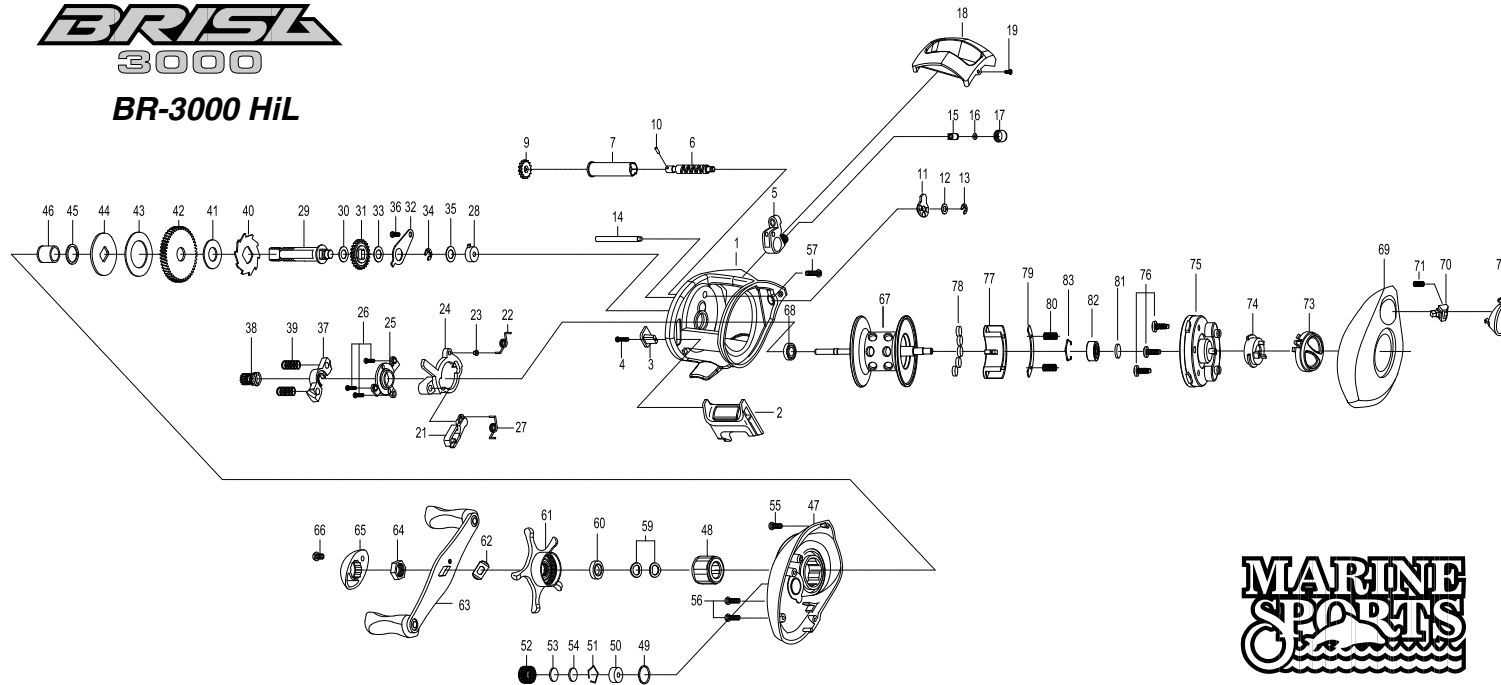


BRISK 3000 BR-3000 HiL



THE ORDER OF THE PART NUMBER IS BASED ON THAT OF THE REEL ASSEMBLY

| NO | PART NAME | NO | PART NAME | NO | PART NAME | NO | PART NAME | NO | PART NAME | NO | PART NAME |
|----|-----------------------------|----|-----------------------|----|------------------------------|----|--------------------------|----|-----------------------|----|--------------------------|
| 1 | FRAME | 17 | PAWL CAP | 33 | IDLER(L) WASHER (B) | 48 | ONE WAY CLUTCH | 64 | HANDLE NUT | 79 | MAGNET HOLDER PLATE |
| 2 | CLUTCH BAR | 18 | FRONT COVER | 34 | E-RING | 49 | O-RING | 65 | HANDLE NUT CAP | 80 | MAGNET HOLDER SPRING(*2) |
| 3 | CLUTCH LINK | 19 | FRONT COVER SCREW | 35 | CRANK SHAFT SPACER(OPTIONAL) | 50 | BEARING | 66 | HANDLE NUT CAP SCREW | 81 | SPOOL SPACER(A) |
| 4 | CLUTCH BAR SCREW | 21 | RETURN PAWL | 36 | BEARING PLATE SCREW | 51 | BEARING RETAINER | 67 | SPOOL ASSEMBLY | 82 | BALL BEARING |
| 5 | LINE GUIDE ASSEMBLY | 22 | CLUTCH SPRING | 37 | PINION YOKE | 52 | CAST CONTROL CAP | 68 | BALL BEARING | 83 | BEARING RETAINER |
| 6 | WORM SHAFT | 23 | CLUTCH SPRING BUSHING | 38 | PINION GEAR | 53 | TENSION WASHER | 69 | LEFT SIDE COVER | | |
| 7 | LINE GUIDE PIPE | 24 | CLUTCH CAM | 39 | PINION YOKE SPRING(*2) | 54 | SPOOL SPACER (B) | 70 | LOCKING PIN | | |
| 9 | IDLER(S) | 25 | CAM PLATE | 40 | RATCHET | 55 | RIGHT SIDE COVER SCREW-A | 71 | LOCKING PIN SPRING | | |
| 10 | WORM SHAFT PIN | 26 | CAM PLATE SCREW (*3) | 41 | RATCHET WASHER | 56 | RIGHT SIDE COVER SCREW-B | 72 | PUSH BUTTON ASSEMBLY | | |
| 11 | WORM SHAFT BUSHING (B) | 27 | RETURN PAWL SPRING | 42 | DRIVE GEAR | 57 | RIGHT SIDE COVER SCREW-C | 73 | CONTROL DIAL ASSEMBLY | | |
| 12 | WORM SHAFT WASHER(OPTIONAL) | 28 | BEARING | 43 | DRAG WASHER (B) | 59 | DRAG SPRING WASHER(*2) | 74 | SLIDE CAM | | |
| 13 | E-RING | 29 | CRANK SHAFT | 44 | DRAG WASHER (D) | 60 | DRAG SPACER | 75 | SPOOL COVER | | |
| 14 | PILLAR | 30 | IDLER(L) WASHER (A) | 45 | SLEEVE WASHER(OPTIONAL) | 61 | STAR DRAG ASSEMBLY | 76 | SPOOL COVER-SCREW(*3) | | |
| 15 | LINE GUIDE PAWL | 31 | IDLER(L) | 46 | SLEEVE | 62 | LEAF SPRING | 77 | MAGNET HOLDER | | |
| 16 | SPACER(OPTIONAL) | 32 | BEARING PLATE | 47 | RIGHT SIDE COVER | 63 | HANDLE ASSEMBLY | 78 | MAGNET(*5) | | |