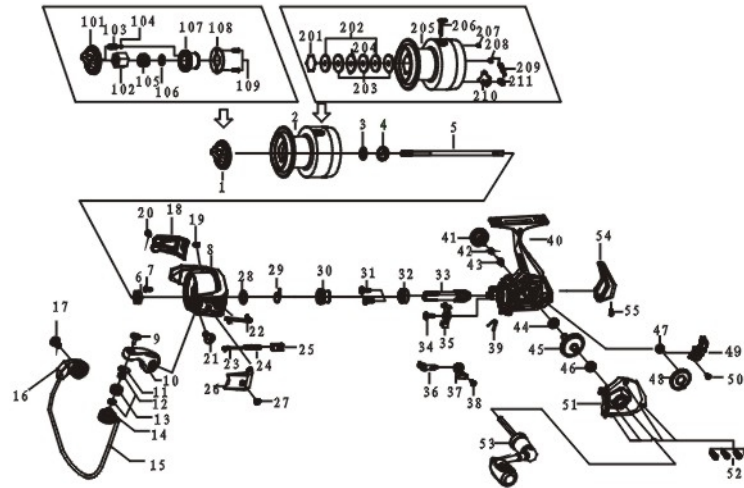


PRISMA



- | | | |
|----------------------------------|------------------------------------|-----------------------------|
| 1 drag knob assembly | 29 rotor washer | 101 drag knob |
| 2 spool assembly | 30 silent ring | 102 drag knob nut |
| 3 spool click gear washer | 31 silent ring bushing | 103 drag knob click spring |
| 4 spool click gear | 32 pinion gear ball bearing screw | 104 drag knob click ball |
| 5 main shaft | 33 pinion gear ball bearing | 105 drag knob spring |
| 6 pinion gear nut | 34 pinion gear | 106 drag knob washer |
| 7 pinion gear nut fixed screw | 35 anti reverse pawl screw | 107 drag knob seat |
| 8 rotor | 36 anti-reverse pawl | 108 drag knob spring |
| 9 line roller screw | 37 anti-reverse shaft | 109 drag screw |
| 10 bail arm | 38 anti-reverse switch | |
| 11 line roller bushing | 39 anti-reverse switch screw | spool assembly |
| 12 line roller washer | 40 anti-reverse spring | 201 hexangular retainer |
| 13 line roller ball bearing | 41 body | 202 key washer |
| 14 line roller | 42 handle cap | 203 drag knob washer |
| 15 line roller shaft | 43 handle screw cap washer | 204 ear washer |
| 16 bail | 44 hexangular washer | 205 spool |
| 17 bail holder | 45 body ball bearing | 206 line hook |
| 18 bail holder side cover screw | 46 drive gear | 207 line hook copper nail |
| 19 bail holder side cover | 47 body cover ball bearing | 208 spring copper nail |
| 20 bail holder side cover screw1 | 48 oscillating gear ball bearing | 209 spool click gear spring |
| 21 bail holder side cover screw2 | 49 oscillating gear | 210 spool click gear |
| 22 Bail arm screw | 50 oscillating slider | 211 click gear copper nail |
| 23 kick lever | 51 oscillating slider screw | |
| 24 spring bail trip | 52 body cover | |
| 25 bail trip shaft spring | 53 body cover screw | |
| 26 bail trip shaft spring seat | 54 Handle assembly | |
| 27 Bail arm side cover | 55 body back decorated cover | |
| 28 Bail arm side cover screw | 56 body back decorated cover screw | |

**MARINE
SPORTS**