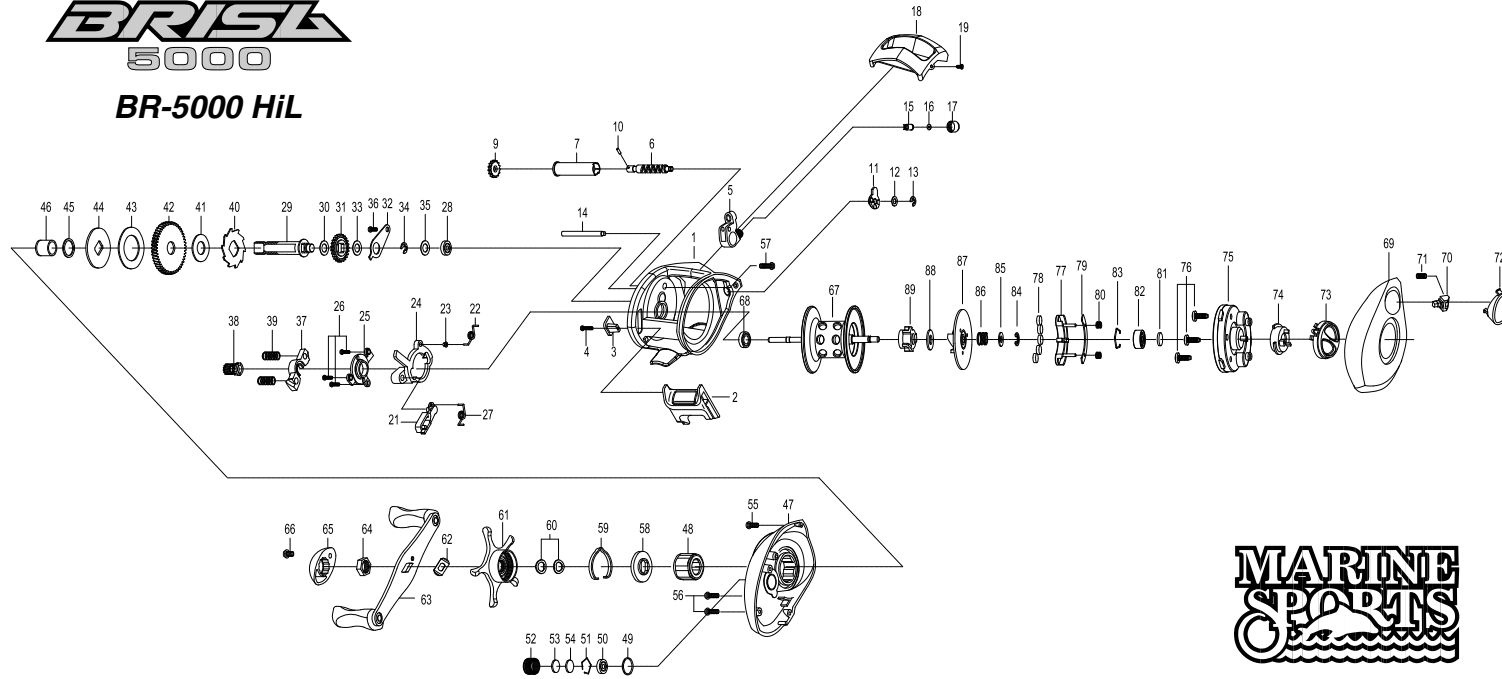


BRISL 5000 BR-5000 HiL



THE ORDER OF THE PART NUMBER IS BASED ON THAT OF THE REEL ASSEMBLY

NO	PART NAME	NO	PART NAME	NO	PART NAME	NO	PART NAME	NO	PART NAME		
1	FRAME	18	FRONT COVER	35	CRANK SHAFT SPACER(OPTIONAL)	51	BEARING RETAINER	67	SPOOL ASSEMBLY	83	BEARING RETAINER
2	CLUTCH BAR	19	FRONT COVER SCREW	36	BEARING PLATE SCREW	52	CAST CONTROL CAP	68	BALL BEARING	84	E-RING
3	CLUTCH LINK	21	RETURN PAWL	37	PINION YOKE	53	TENSION WASHER	69	LEFT SIDE COVER	85	WASHER
4	CLUTCH BAR SCREW	22	CLUTCH SPRING	38	PINION GEAR	54	SPOOL SPACER (B)	70	LOCKING PIN	86	BRAKE CAM SPRING
5	LINE GUIDE ASSEMBLY	23	CLUTCH SPRING BUSHING	39	PINION YOKE SPRING(*2)	55	RIGHT SIDE COVER SCREW-A	71	LOCKING PIN SPRING	87	BRAKE CAM - B ASSEMBLY
6	WORM SHAFT	24	CLUTCH CAM	40	RATCHET	56	RIGHT SIDE COVER SCREW-B	72	PUSH BUTTON ASSEMBLY	88	BRAKE CAM WASHER
7	LINE GUIDE PIPE	25	CAM PLATE	41	RATCHET WASHER	57	RIGHT SIDE COVER SCREW-C	73	CONTROL DIAL ASSEMBLY	89	BRAKE CAM - A
9	IDLER(S)	26	CAM PLATE SCREW (*3)	42	DRIVE GEAR	58	CLICK PLATE	74	SLIDE CAM		
10	WORM SHAFT PIN	27	RETURN PAWL SPRING	43	DRAG WASHER (B)	59	CLICK LEAF SPRING	75	SPOOL COVER		
11	WORM SHAFT BUSHING (B)	28	BALL BEARING	44	DRAG WASHER (D)	60	DRAG SPRING WASHER(*2)	76	SPOOL COVER-SCREW(*3)		
12	WORM SHAFT WASHER(OPTIONAL)	29	CRANK SHAFT	45	SLEEVE WASHER(OPTIONAL)	61	STAR DRAG ASSEMBLY	77	MAGNET HOLDER		
13	E-RING	30	IDLER(L) WASHER (A)	46	SLEEVE	62	LEAF SPRING	78	MAGNET(*5)		
14	PILLAR	31	IDLER(L)	47	RIGHT SIDE COVER	63	HANDLE ASSEMBLY	79	MAGNET HOLDER PLATE		
15	LINE GUIDE PAWL	32	BEARING PLATE	48	ONE WAY CLUTCH	64	HANDLE NUT	80	MAGNET HOLDER SPRING(*2)		
16	SPACER(OPTIONAL)	33	IDLER(L) WASHER (B)	49	O-RING	65	HANDLE NUT CAP	81	SPOOL SPACER(A)		
17	PAWL CAP	34	E-RING	50	BALL BEARING	66	HANDLE NUT CAP SCREW	82	BALL BEARING		