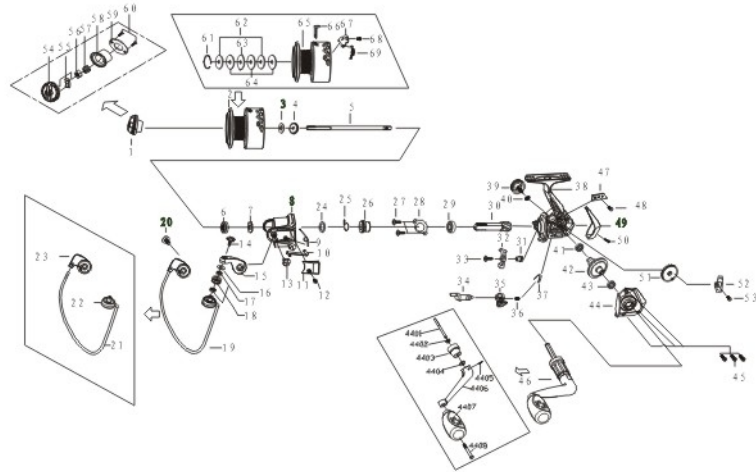


# PRISMA

## MICRO



- |                                   |                                 |                             |
|-----------------------------------|---------------------------------|-----------------------------|
| 1 Drag Knob Assembly              | 33 Anti-reverse Pawl Screw      | 63 Eared Washer             |
| 2 Spool Assembly                  | 34 Anti-reverse Shaft           | 64 Brake Washer             |
| 3 Spool Clicker Fixing Plate      | 35 Anti-reverse Switch          | 65 Spool                    |
| 4 Spool Clicker                   | 36 Anti-reverse Switch Screw    | 66 Line Clip                |
| 5 Main Shaft                      | 37 Anti-reverse Spring          | 67 Spool Clicker            |
| 6 Pinion Bolt                     | 38 Body                         | 68 Spool Clicker Screw      |
| 7 Rotor Washer                    | 39 Handle Cap                   | 69 Spool Clicker Spring     |
| 8 Rotor                           | 40 Handle Cap Washer            |                             |
| 9 Bail Arm Spring                 | 41 Body Bearing                 | Handle Assembly             |
| 10 Bail Trip Lever                | 42 Drive Gear                   | 4401 Hexangular Core        |
| 11 Bail Arm Cover                 | 43 Main Cover Bearing           | 4402 Hexangular Core Washer |
| 12 Bail Arm Cover Screw           | 44 Body Cover                   | 4403 Bushing                |
| 13 Bail Arm Screw                 | 45 Body Cover Screw             | 4404 Bushing Washer         |
| 14 Line Roller Screw              | 46 Handle Assembly              | 4405 Handle Pin             |
| 15 Bail Arm                       | 47 Slider Fixing Plate          | 4406 Handle                 |
| 16 Line Roller Washer             | 48 Slider Fixing Plate Screw    | 4407 Wooden Knob            |
| 17 Line Roller Ball Bearing       | 49 Rear Decoration Cover        | 4408 Knob Rivet             |
| 18 Line Roller                    | 50 Rear Cover Screw             |                             |
| 19 Bail Line Assembly             | 51 Oscillating Gear             |                             |
| 20 Bail Holder Screw              | 52 Oscillating Slider           |                             |
| 21 Bail Line                      | 53 Oscillating Slider Screw     |                             |
| 22 Line Roller Shaft              | 54 Drag Knob                    |                             |
| 23 Bail Holder                    | 55 Drag Knob Clicker Plate      |                             |
| 24 Rotor Washer                   | 56 Drag Knob Screw              |                             |
| 25 Silent Spring                  | 57 Brake Spring                 |                             |
| 26 Silent Spring Bush             | 58 Tightening Seat              |                             |
| 27 Pinion Gear Ball Bearing Screw | 59 Tightening Seat Fixing Plate |                             |
| 28 Ball Bearing Fixing Plate      | 60 Fixing Plate Screw           |                             |
| 29 Pinion Gear Ball Bearing       | 61 Hexangular Retainer          |                             |
| 30 Pinion Gear                    | 62 Key Washer                   |                             |
| 31 Anti-reverse Pawl Bush         |                                 |                             |
| 32 Anti-reverse Pawl              |                                 |                             |

**MARINE**  
**SPORTS**