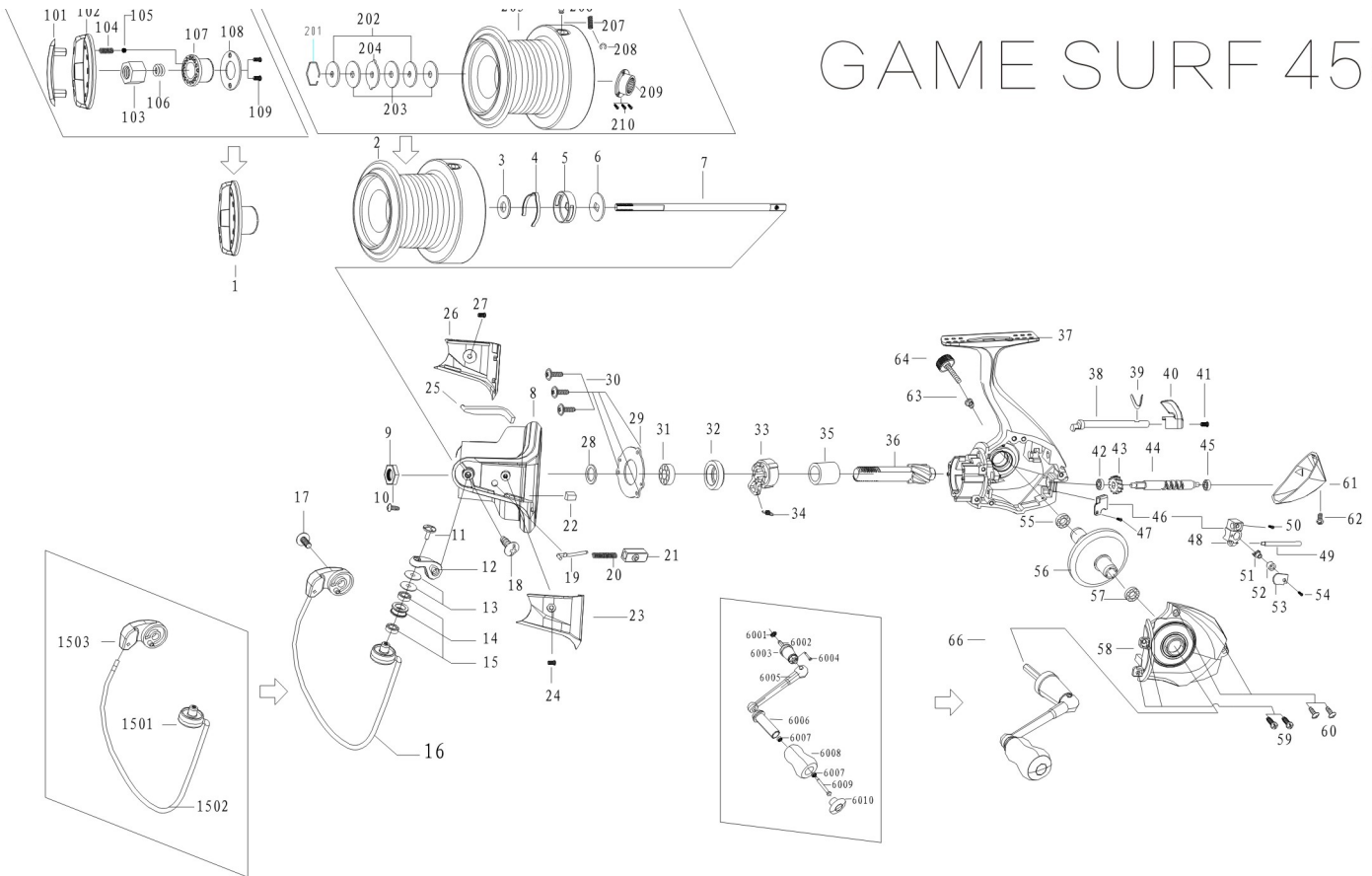


GAME SURF 4500



- | | | |
|---------------------------------------------|-----------------------------------------------|-------------------------|
| 1 drag knob assembly | 34 one way clutch spring | drag knob assembly |
| 2 spool assembly | 35 inner ring | 101 drag knob decorate |
| 3 spool click gear fixed plate | 36 pinion gear | 102 drag knob |
| 4 spool click gear | 37 body | 103 drag knob nut |
| 5 spool click gear seat | 38 anti-reverse shaft | 104 drag knob click ri |
| 6 spool click gear seat key washer | 39 anti-reverse spring | 105 drag knob click ba |
| 7 main shaft | 40 anti-reverse switch | 106 brake spring |
| 8 rotor | 41 anti-reverse switch screw | 107 impelling seat |
| 9 hexangular cap | 42 worm shaft ball bearing | 108 impelling seat bus |
| 10 hexangular fixed screw | 43 idle gear | 109 impelling seat scr |
| 11 line roller fixed screw | 44 worm shaft | spool assembly |
| 12 bail arm | 45 worm shaft ball bearing | 201 hexangular retain |
| 13 line roller bushing | 46 worm shaft ball bearing fixed washer | 202 key washer |
| 14 line roller | 47 worm shaft ball bearing fixed washer screw | 203 brake washer |
| 15 line roller ball bearing | 48 oscillating slider | 204 eared washer |
| 16 bail assembly | 49 oscillating slider pin | 205 spool |
| 17 bail holder fixed screw | 50 oscillating slider screw | 206 line hook |
| 18 bail arm fixed screw | 51 connect pawl | 207 line hook spring |
| 19 bail trip shaft | 52 connect pawl bushing | 208 line hook E shape |
| 20 trip shaft spring | 53 connect pawl fixed washer | 209 spool clicker sea |
| 21 trip shaft spring seat | 54 bushing fixed screw | 210 spool clicker seat |
| 22 Balance Weight | 55 body ball bearing | bail assembly |
| 23 bail arm side cover | 56 drive gear | 1501 line roller shaft |
| 24 bail arm side cover screw | 57 body cover ball bearing | 1502 bail |
| 25 kick lever | 58 body cover | 1503 bail holder |
| 26 bail holder side cover | 59 body cover screw | handle assembly |
| 27 bail holder side cover screw | 60 body cover screw | 6001 hexangular teeth w |
| 28 spool seat washer | 61 rear body decorated cover | 6002 hexangular Shaft |
| 29 one-way clutch ball bearing fixed washer | 62 rear body decorated cover screw | 6003 aluminium handle C |
| 30 one-way clutch ball bearing fixed screw | 63 hexangular washer | 6004 handle pin |
| 31 pinion gear ball bearing | 64 handle cap | 6005 handle |
| 32 one way clutch ball bearing bushing | 65 handle assembly | 6006 rivet bushing |
| 33 one way clutch ball bearing | | 6007 handle ball bearin |
| | | 6008 knob |
| | | 6009 knob rivet |
| | | 6010 handle knob cap |