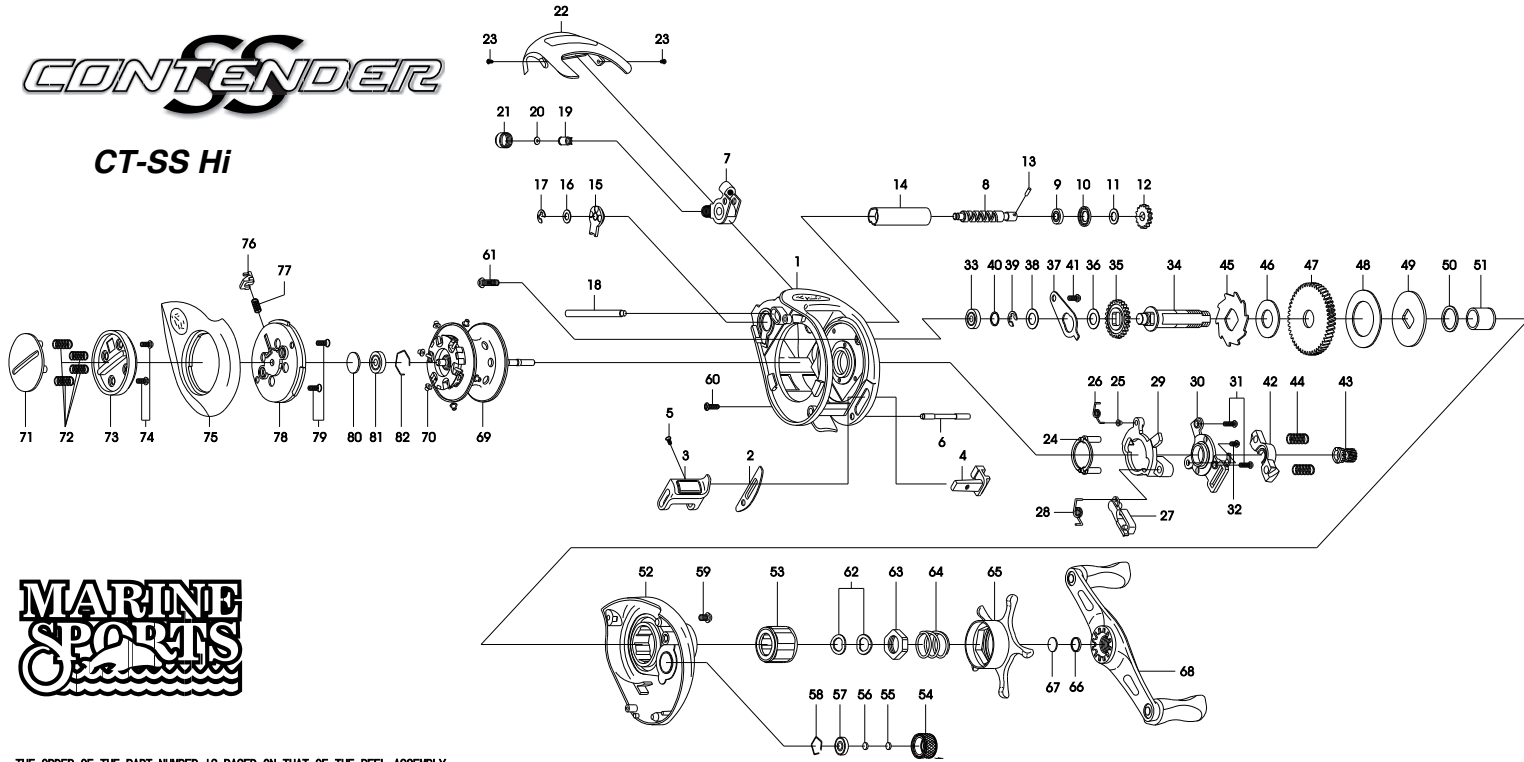


CONTENDER

CT-SS Hi



MARINE SPORTS

THE ORDER OF THE PART NUMBER IS BASED ON THAT OF THE REEL ASSEMBLY

NO	PART NAME	NO	PART NAME	NO	PART NAME	NO	PART NAME	NO	PART NAME	NO	PART NAME
1	FRAME ASSEMBLY	16	WORM SHAFT WASHER(OPTIONAL)	31	CAM PLATE SCREW (A) (+2)	46	RATCHET WASHER	61	RIGHT SIDE COVER SCREW (C)	76	LOCK PIN
2	CLUTCH BAR PLATE	17	E-RING	32	CAM PLATE SCREW (B)	47	DRIVE GEAR	62	DRAG SPRING WASHER(+2)	77	LOCK PIN SPRING
3	CLUTCH BAR ASSEMBLY	18	PILLAR	33	BALL BEARING	48	DRAG WASHER (B)	63	DRAG NUT	78	SPOOL COVER ASSEMBLY
4	CLUTCH LINK	19	LINE GUIDE PAWL	34	CRANK SHAFT	49	DRAG WASHER (D)	64	STAR DRAG SPRING	79	SPOOL COVER SCREW(+2)
5	CLUTCH BAR SCREW	20	SPACER(OPTIONAL)	35	IDLER(L)	50	SLEEVE WASHER(OPTIONAL)	65	STAR DRAG ASSEMBLY	80	SPOOL SPACER(A)
6	CLUTCH BAR SUPPORT	21	PAWL CAP	36	IDLER(L) WASHER(A)(OPTIONAL)	51	SLEEVE	66	CUSHION WASHER	81	BALL BEARING
7	LINE GUIDE ASSEMBLY	22	FRONT COVER	37	BEARING PLATE	52	RIGHT SIDE COVER ASSEMBLY	67	HANDLE SPACER	82	BEARING RETAINER
8	WORM SHAFT	23	FRONT COVER SCREW(+2)	38	IDLER(L) WASHER (B)	53	ONE WAY CLUTCH	68	HANDLE ASSEMBLY(INCL.4BB)		
9	BALL BEARING	24	YOKE HOLDER	39	E-RING	54	CAST CONTROL CAP ASSEMBLY	69	SPOOL ASSEMBLY(INCL.1BB)		
10	WORM SHAFT BUSHING	25	CLUTCH SPRING BUSHING	40	CRANK SHAFT SPACER(OPTIONAL)	55	TENSION WASHER	70	BRAKE COLLAR(WHITE)(+6)		
11	IDLER(S) WASHER(OPTIONAL)	26	CLUTCH SPRING	41	BEARING PLATE SCREW	56	SPOOL SPACER (B)	71	LEVER PLATE		
12	IDLER(S)	27	RETURN PAWL	42	PINION YOKE	57	BALL BEARING	72	LEVER PLATE SPRING(+4)		
13	WORM SHAFT PIN	28	RETURN PAWL SPRING	43	PINION GEAR	58	BEARING RETAINER	73	LOCK LEVER		
14	LINE GUIDE PIPE	29	CLUTCH CAM	44	PINION YOKE SPRING(+2)	59	RIGHT SIDE COVER SCREW (A)	74	LOCK LEVER SCREW(+2)		
15	WORM SHAFT BUSHING (B)	30	CAM PLATE	45	RATCHET	60	RIGHT SIDE COVER SCREW (B)	75	LEFT SIDE COVER ASSEMBLY		