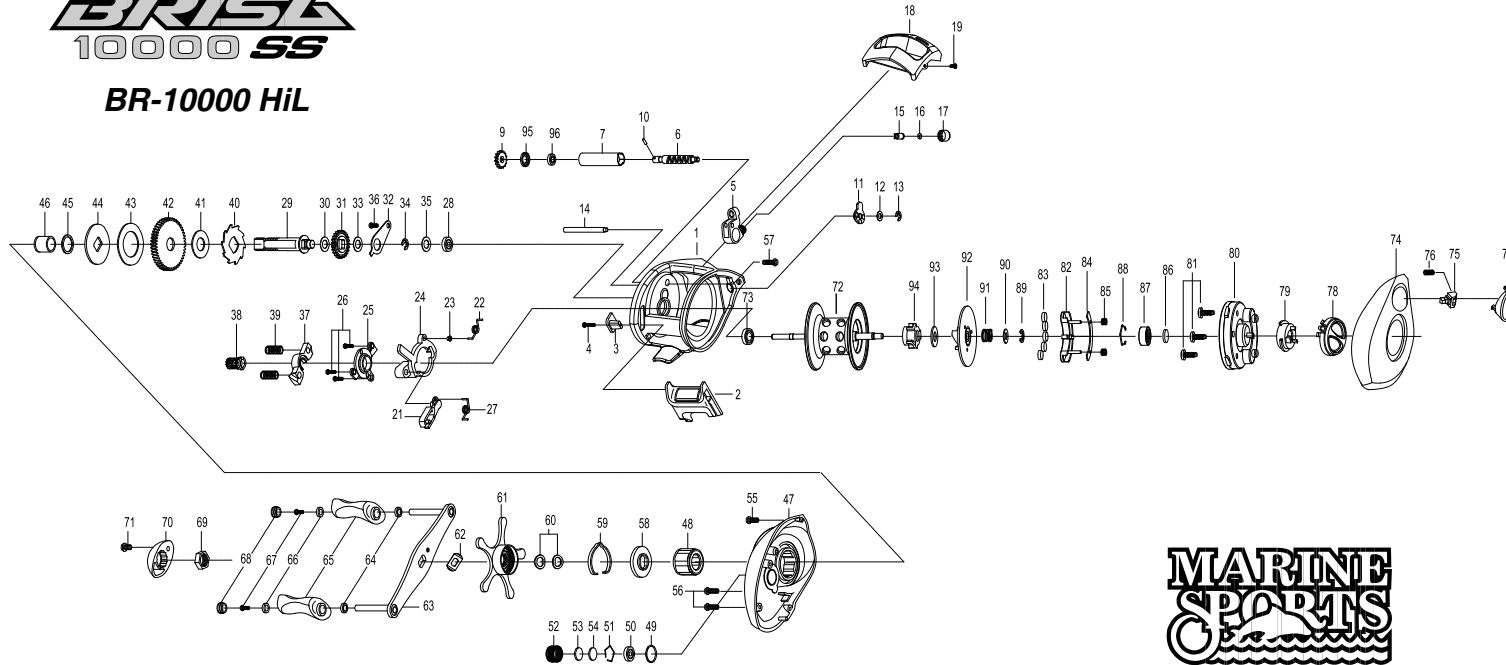


BRISL 10000 SS

BR-10000 HiL



THE ORDER OF THE PART NUMBER IS BASED ON THAT OF THE REEL ASSEMBLY

NO	PART NAME	NO	PART NAME	NO	PART NAME	NO	PART NAME	NO	PART NAME	NO	PART NAME
1	FRAME	18	FRONT COVER	35	CRANK SHAFT SPACER(OPTIONAL)	51	BEARING RETAINER	67	SCREW(*2)	83	MAGNET(*5)
2	CLUTCH BAR	19	FRONT COVER SCREW	36	BEARING PLATE SCREW	52	CAST CONTROL CAP	68	HANDLE KNOB CAP(*2)	84	MAGNET HOLDER PLATE
3	CLUTCH LINK	21	RETURN PAWL	37	PINION YOKE	53	TENSION WASHER	69	HANDLE NUT	85	MAGNET HOLDER SPRING(*2)
4	CLUTCH BAR SCREW	22	CLUTCH SPRING	38	PINION GEAR	54	SPOOL SPACER (B)	70	HANDLE NUT CAP	86	SPOOL SPACER(A)
5	LINE GUIDE ASSEMBLY	23	CLUTCH SPRING BUSHING	39	PINION YOKE SPRING(*2)	55	RIGHT SIDE COVER SCREW-A	71	HANDLE NUT CAP SCREW	87	BALL BEARING
6	WORM SHAFT	24	CLUTCH CAM	40	RATCHET	56	RIGHT SIDE COVER SCREW-B	72	SPOOL ASSEMBLY	88	BEARING RETAINER
7	LINE GUIDE PIPE	25	CAM PLATE	41	RATCHET WASHER	57	RIGHT SIDE COVER SCREW-C	73	BALL BEARING	89	E-RING
9	IDLER(S)	26	CAM PLATE SCREW (*3)	42	DRIVE GEAR	58	CLICK PLATE	74	LEFT SIDE COVER	90	WASHER
10	WORM SHAFT PIN	27	RETURN PAWL SPRING	43	DRAG WASHER (B)	59	CLICK LEAF SPRING	75	LOCKING PIN	91	BRAKE CAM SPRING
11	WORM SHAFT BUSHING (B)	28	BALL BEARING	44	DRAG WASHER (D)	60	DRAG SPRING WASHER(*2)	76	LOCKING PIN SPRING	92	BRAKE CAM - B ASSEMBLY
12	WORM SHAFT WASHER(OPTIONAL)	29	CRANK SHAFT	45	SLEEVE WASHER(OPTIONAL)	61	STAR DRAG ASSEMBLY	77	PUSH BUTTON ASSEMBLY	93	BRAKE CAM WASHER
13	E-RING	30	IDLER(L) WASHER (A)	46	SLEEVE	62	LEAF SPRING	78	CONTROL DIAL ASSEMBLY	94	BRAKE CAM - A
14	PILLAR	31	IDLER(L)	47	RIGHT SIDE COVER	63	HANDLE ASSEMBLY	79	SLIDE CAM	95	BALL BEARING
15	LINE GUIDE PAWL	32	BEARING PLATE	48	ONE WAY CLUTCH	64	BALL BEARING(*2)	80	SPOOL COVER	96	WORM SHAFT BUSHING
16	SPACER(OPTIONAL)	33	IDLER(L) WASHER (B)	49	O-RING	65	HANDLE KNOB(*2)	81	SPOOL COVER-SCREW(*3)		
17	PAWL CAP	34	E-RING	50	BALL BEARING	66	BALL BEARING(*2)	82	MAGNET HOLDER		