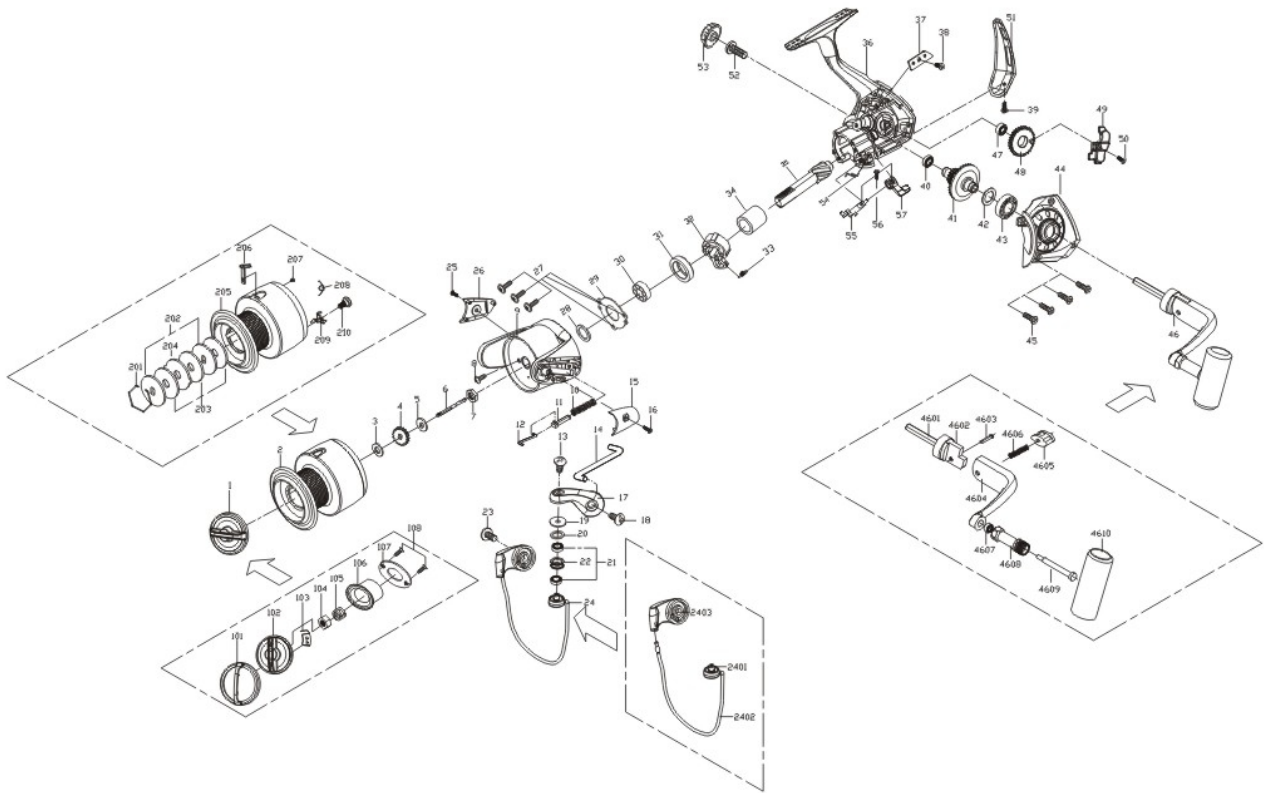


ALTIMA



- 1 drag knob assembly
- 2 spool assembly
- 3 spool click gear fixed washer
- 4 spool click gear
- 5 spool click gear washer
- 6 main shaft
- 7 pinion gear nut
- 8 pinion gear nut fixed screw
- 9 rotor
- 10 bail trip spring
- 11 bail trip spring seat
- 12 spring seat bail trip
- 13 line roller screw
- 14 kick lever
- 15 bail arm side cover
- 16 bail arm side cover screw
- 17 bail arm
- 18 bail arm screw
- 19 line roller bushing
- 20 line roller washer
- 21 line roller ball bearing
- 22 line roller
- 23 bail holder screw
- 24 bail assembly
- 25 bail holder side cover screw
- 26 bail holder side cover
- 27 body head fixed screw
- 28 rotor washer
- 29 bail bearing fix board

- 30 pinion shaft ball bearing
- 31 ball bearing bushing
- 32 one-way ball bearing
- 33 one-way ball bearing spring
- 34 inner ring
- 35 pinion gear
- 36 body
- 37 oscillating slide fixed board
- 38 oscillating slide fixed screw
- 39 decorated cover screw
- 40 body ball bearing
- 41 drive gear
- 42 drive gear washer
- 43 body cover ball bearing
- 44 body cover
- 45 body cover screw
- 46 handle arm assembly
- 47 oscillating gear ball bearing
- 48 oscillating gear
- 49 oscillating slide
- 50 oscillating slide screw
- 51 body back decorated cover
- 52 handle arm fixed screw
- 53 handle cap
- 54 anti-reverse spring
- 55 anti-reverse shaft
- 56 anti-reverse switch screw
- 57 anti-reverse switch

- Drag knob assembly
- 101 drag knob decorated cover
- 102 drag knob
- 103 drag knob click gear
- 104 knob nut
- 105 drag knob spring
- 106 press tight seat
- 107 press tight seat fix board
- 108 fix board screw
- bail assembly
- 2401 line roller shaft
- 2402 bail wire
- 2403 bail holder
- handle assembly
- 4601 handle cap insert
- 4602 joint
- 4603 handle fix pin
- 4604 handle arm
- 4607 handle arm ball bearing
- 4608 rivet collar
- 4609 handle rivet
- 4610 handle knob

- Spool assembly
- 201 hexangular ouch
- 202 key washer
- 203 drag washer
- 204 eared washer
- 205 spool
- 206 line hook
- 207 line hook brass needle
- 208 spool click gear spring
- 209 spool click gear
- 210 spool click gear fixed screw

